

The Microbiome, Timing, and Barrier Function in the Context of Allergic Disease

Duane R. Wesemann^{1,*} and Cathryn R. Nagler^{2,*}

¹Department of Rheumatology, Immunology and Allergy, Brigham and Women's Hospital and Harvard Medical School, Boston, MA 02115, USA

²Committee on Immunology, Department of Pathology, University of Chicago, Chicago, IL 60637, USA

*Correspondence: dwesemann@bwh.harvard.edu (D.R.W.), cnagler@bsd.uchicago.edu (C.R.N.)

<http://dx.doi.org/10.1016/j.immuni.2016.02.002>

Allergic disease affects millions. Despite many advances in our understanding of the immune system in the past century, the physiologic underpinning for the existence of allergy remains largely mysterious. Food allergies, in particular, have increased dramatically in recent years, adding a new sense of urgency to unraveling this mystery. The concurrence of significant lifestyle changes in Western societies with increasing disease prevalence implies a causal link. Demographic variables that influence the composition and function of the commensal microbiota early in life seem to be most important. Identifying the evolutionary and physiologic foundations of allergic disease and defining what about our modern environment is responsible for its increased incidence will provide insights critical to the development of new approaches to prevention and treatment.

Introduction

The prevalence of allergic disease has climbed steadily during the past 50 years (Asher et al., 2006; Okada et al., 2010). Its clinical presentation often follows an ordered developmental progression (atopic dermatitis, food allergy, asthma, allergic rhinitis) referred to as the allergic march (Alduraywish et al., 2016). Epidemic increases in asthma prevalence were the first to gain notice (Eder et al., 2006; Masoli et al., 2004). More recently, potentially life-threatening allergic responses to food have become an important public health concern (Prescott and Allen, 2011; Sicherer and Sampson, 2014). Nut-free classrooms, virtually unheard of in earlier generations, are now commonplace. In developed countries worldwide, as many as 10% of preschool children currently suffer from food allergies (Prescott et al., 2013). Recent reports estimate that there are 15 million children and adults with food allergies in the United States alone (Branum and Lukacs, 2008; Jackson et al., 2013). Although hundreds of foods can elicit an allergic response (Hefle et al., 1996), eight in particular—milk, eggs, peanuts, tree nuts, wheat, soy, fish, and shellfish—account for most cases (Sicherer and Sampson, 2014). Genetic susceptibility cannot explain a marked increase in prevalence in such a short time frame, suggesting that something about our modern environment is promoting allergic disease.

We begin this review with a brief history of allergy, focusing on IgE-mediated hypersensitivity, and describe emerging concepts regarding its potential physiologic roles. We then discuss recent data that point to early life as an important time where environmental context—particularly with regard to the microbiota—influences susceptibility to allergic disease. We end with some remarks on how recent findings will inform the development of novel therapeutic strategies to prevent or treat food allergy and other allergic diseases.

Why Does Allergy Exist?

The term “allergy” was coined in 1906 by the Viennese pediatrician Baron Clemens von Pirquet from the Greek words *allos*

(other or altered) and *ergon* (works or reaction). Von Pirquet observed that changes in reactivity occurred on subsequent exposures to an antigen. In some instances, re-exposure resulted in diminished reactivity whereas in others reactivity increased (Igea, 2013). A major advance in the understanding of food allergy occurred in 1921, when Prausnitz and Kustner determined that hypersensitivity to an antigen could be passively transferred with serum from one individual—namely, Kustner, who was allergic to fish—to another—namely, Prausnitz, who was not allergic to fish—by intradermal injection. When Prausnitz subsequently ate fish, the injection site became hot, red, and swollen (Prausnitz and Kustner, 1921). The antigens responsible for this reaction were called atopens, and the plasma factor that conferred sensitivity was known as atopic reagin (Paul, 2013). In 1966, Teruko and Kimishige Ishizaka showed that a novel class of immunoglobulin (Ig), which they designated γ E-globulin, or IgE, was responsible for reaginic activity (Ishizaka and Ishizaka, 1966).

Since the discovery of IgE, much about the molecular and cellular mechanisms by which allergens elicit clinical symptoms has been elucidated. However, little insight has been gained into why allergies exist in the first place. One hypothesis prevalent in the current literature suggests that Th2 cell immunity evolved to facilitate the elimination of worms and parasites and that allergy represents a misfiring of this response to otherwise innocuous substances (Fitzsimmons and Dunne, 2009; Pulendran and Artis, 2012; Stetson et al., 2004). The overwhelming majority of allergens are not, however, helminths or their products. The major allergens are a diverse group for which no one structural or biological activity appears to dominate, and include proteins associated with shellfish, nuts, venoms, pollens, animal dander, and penicillin (Erwin and Platts-Mills, 2005). It is difficult to conceptualize that within an immune system with both innate and adaptive components that can respond with astonishing precision, a sub-program exists where nearly all of the reactivity is off-target or misguided to common environmental substances. Profet (1991) articulated a more comprehensive and intriguing

hypothesis that she termed the toxin hypothesis of allergy; a similar perspective was offered by Palm et al. (2012). This hypothesis states that allergic responses are targeted to expel and/or reduce the potential damage incurred by noxious substances, such as toxins and venoms, in addition to parasites and worms. In this view, many, if not all, allergens have noxious potential, either directly or by proxy (Palm et al., 2012). This theory predicts that the manifestation of allergy in some individuals involves excessive, and potentially tissue damaging, immune reactivity against the host. Allergic hypersensitivity might represent the immunologic cost of protection from noxious damage similar to the way that the pathology associated with severe pneumonia or sepsis is a consequence of immunologic responses against infection with microbial pathogens—both are intended to protect their hosts, but can be deadly if excessive. In each case, symptoms occur when subclinical mechanisms of pathogen or noxious substance avoidance or clearance mechanisms fail. Studies demonstrating that phospholipase A2 in bee venom assists in orchestrating Th2 cell immunity (Palm et al., 2013) and that anti-venom IgE provides a survival advantage against subsequent venom exposures (Marichal et al., 2013) have provided recent support for the toxin hypothesis of allergy.

Although the evolutionary selection pressures at the root of allergic hypersensitivity remain to be fully explained, a deeper understanding of the physiologic role of allergy might provide insight into underlying variations in disease susceptibility on both the genetic and environmental levels. A *barrier regulation hypothesis* of allergy suggests that diverse barrier mechanisms including allergen exclusion and deactivation might underlie this variance. In the context of food allergy, non-food-allergic individuals might have relatively more effectual barrier immunity—thus leaving the allergic response untriggered. Allergen penetration of barriers might induce perturbations that lead to epithelial stress, which can set the stage for a Th2 cell response (Pulendran and Artis, 2012; Strid et al., 2011). The fact that Th2 cell immunity, in turn, sets tissue repair pathways in motion provides further evidence for its tight coupling to barrier integrity (Pulendran and Artis, 2012). Although it is not clear what barrier mechanisms might be defective in allergic individuals, our modern environment harbors clues. In this context, the rising prevalence of food allergies in westernized societies parallels that of other allergic and inflammatory disorders such as asthma, inflammatory bowel disease, and diabetes (Thorburn et al., 2014). These diseases, and others, are increasingly associated with demographic variables uncommon in earlier generations that have become widespread in the 21st century including Caesarean birth, formula feeding, repeated exposure to antibiotics, and consumption of a diet of processed foods high in fat and sugar and low in dietary fiber (Cho and Blaser, 2012; Feehley et al., 2012). What these lifestyle practices have in common is their ability to alter the composition of the bacterial populations that live in and on our bodies.

Acquisition of a Commensal Microbiota

Changes that occur during infancy and early childhood seem to be particularly important. The last ten years has witnessed an explosion of information about microbial symbionts, which outnumber the cells of their eukaryotic hosts by at least 10-fold

(Savage, 1977). Commensal bacteria are among the best characterized, but other microbial populations including viruses, bacteriophage, and fungi abound. It is clear that the influence of these microbial inhabitants on their hosts' physiology is profound. Nowhere is this more apparent than in the regulation of immunity at the mucosal barriers that form the body's interface with the external environment (Cho and Blaser, 2012). Characteristic commensal bacteria occupy different anatomic sites (Cho and Blaser, 2012; Human Microbiome Project Consortium, 2012). Maintenance of homeostasis is a particular challenge in the intestines, the lumen of which contains, in addition to the many potential antigens present in food, trillions of bacteria that increase in density from its proximal to distal end (Donaldson et al., 2016). Initial colonization occurs at birth and, during natural delivery, bacteria derived from the vagina and feces provide the founder population for the neonate (Koenig et al., 2011; Pantoja-Feliciano et al., 2013). Breast milk further shapes the diversification of the microbiota by providing a rich source of secretory IgA, as well as prebiotic glycans that promote the expansion of species adapted to utilize this food source (Barile and Rastall, 2013; Coppa et al., 2004; Rogier et al., 2014). Caesarean birth and formula feeding disturb this co-evolved host-microbe developmental strategy. In infants born by Caesarean section, bacterial populations derived from the skin of the mother or caregiver predominate (Dominguez-Bello et al., 2010; Mueller et al., 2015). Formula feeding might exacerbate this effect; because our knowledge of all of the factors that influence the emergence of the neonatal microbiota is incomplete, pre- or probiotic-supplemented infant formulas might not fully replicate the effect of breast milk on neonatal microbial succession and stability (Guaraldi and Salvatori, 2012). The composition of intestinal bacterial communities is plastic during infancy and early childhood and continues to change rapidly in response to environmental interventions, including invasion by pathogenic microorganisms, antibiotic treatment, and diet (Dominguez-Bello et al., 2011), which might, in turn, affect immune homeostasis. Not surprisingly, antibiotic use profoundly impacts these developing microbial communities; emerging epidemiological data links pre-natal and early post-natal antibiotic use to the subsequent development of atopic dermatitis (Lee et al., 2014) and cow's milk allergy (Metsälä et al., 2013).

The Window of Opportunity in Early Life

Perturbations in the composition of the commensal microbiota during a neonatal window of opportunity around the time of weaning have been associated with the development of atopy in various murine models (Bashir et al., 2004; Hill et al., 2012; Olszak et al., 2012; Russell et al., 2012; Stefka et al., 2014). Recent analysis of a large prospective birth cohort supports the concept that gut dysbiosis during the first 100 days of life can influence the subsequent development of allergic disease (Arrieta et al., 2015). Bacteria in the genera *Lachnospira*, *Veillonella*, *Faecalibacterium*, and *Rothia*, normally abundant, were selectively depleted in samples obtained at 3 months of age in infants who exhibited wheezing and positive allergen skin prick testing at 12 months when compared to controls that didn't exhibit this clinical phenotype. This dysbiosis was no longer detectable in fecal samples obtained at the 12-month time point (Arrieta et al., 2015; Dominguez-Bello and Blaser, 2015). Studies that

Box 1. What Is Sensitization?

Treating and curing food allergy will probably require experts in multiple fields of clinical and basic sciences. A clear language can enhance communication and facilitate scientific advances. Over the past decades, words such as sensitization, desensitization, and tolerance have become confusing in the setting of dialogue between clinicians and scientists. As an attempt to align language in a mechanistic context and to foster clarity between fields, we propose that the following clarifications to the nomenclature be considered.

Clinical sensitization. A state where allergic symptoms are expected to appear upon exposure to the allergen based on history or testing. This is established by a clinical history of unambiguous association and/or by oral food challenge in allergist's office. This term is similar to what some refer to as being clinically reactive.

Clinical desensitization. The loss of clinical reactivity to an allergen for which one was previously clinically sensitized. In food allergy, this often occurs in the setting of an experimental desensitization program with escalating doses of the particular food. Clinical desensitization often occurs without molecular desensitization, but the desensitized state, if achieved, might require continued allergen exposure.

Molecular sensitization. The presence of IgE specific for a food allergen. Molecular sensitization is not sufficient for clinical sensitization.

Molecular desensitization. The loss of measureable allergen-specific IgE.

Sustained unresponsiveness. Acquisition of persistent non-reactivity after clinical desensitization.

Tolerance. Systemic non-responsiveness to dietary antigen mediated by an immunological process that actively maintains mucosal homeostasis. Maintenance dosing is not required.

predate the advent of high throughput sequencing methodologies have associated commensal dysbiosis with the pathogenesis of allergic disease (Björkstén et al., 1999, 2001; Kalliomäki et al., 2001). More recent work has confirmed and extended these earlier findings (Nakayama et al., 2011; Thompson-Chagoyan et al., 2010, 2011; Abrahamsson et al., 2012; Azad et al., 2015; Ling et al., 2014; Nylund et al., 2015; Penders et al., 2013). Berni Canani et al. (2016) showed that the intestinal microbiota of infants allergic to cow's milk is significantly more diverse than that of healthy age-matched controls when obtained at the time of diagnosis at 4–5 months of age. Early life changes in fecal bacterial composition and diversity present a “chicken and egg” conundrum. Do environmentally induced changes in the intestinal microbiota drive allergic disease by limiting microbial diversity and depleting populations of bacteria with barrier-protective function? Or is intestinal dysbiosis itself the consequence of allergic inflammation, as some murine model work seems to suggest (Noval Rivas et al., 2013)? These two scenarios are not mutually exclusive; they might operate at different points in space and time. In this context, the intestinal microbiota is likely to have multiple complex roles in initiating, regulating, and promoting allergic sensitization.

The Skin Microbiome and Epicutaneous Sensitization

The allergic march typically manifests first in the skin, suggesting that this site might have either a particular role in initiating allergic sensitization or the lowest threshold to manifest symptoms. The skin has a site-specific microbiome that varies from region to region; different niche-specific communities populate moist or dry areas (Belkaid and Segre, 2014). In patients with atopic dermatitis, marked reductions in skin microbial diversity occur during disease flares; effective treatment restores diversity to the skin bacterial community (Kong et al., 2012). Flares are characterized by an increased abundance of pathogenic *S. aureus* (which accounts for the overall drop in microbial diversity). In mice, the release of δ -toxin by *S. aureus* induces mast cell degranulation and exacerbates allergic sensitization to a model antigen applied to tape-stripped skin (Nakamura et al., 2013). Mutations in filaggrin—a gene product required for skin epithelial barrier function—are strongly associated with atopic dermatitis in genome-wide association studies (Baurecht et al., 2007; Brown et al., 2008; Filipiak-Pittroff et al., 2011; McAleer and Irvine, 2013; Palmer et al., 2006, 2007; Weidinger et al., 2006). Accordingly, atopic-like skin lesions develop, and allergen priming is facilitated, in mice homozygous for a spontaneous deactivating mutation in the gene encoding filaggrin (designated *Flg^{ft}* for flaky tail mutant) (Fallon et al., 2009). In addition, although spontaneous dermatitis appears to develop to the same degree in germ-free (GF) and specific-pathogen-free (SPF) *Flg^{ft}* mice, commensal bacteria are important for IL17A expression as well as eosinophil and neutrophil recruitment to sites of inflammation in these animals (Hoff et al., 2015). In the setting of impaired epithelial barrier function, environmentally induced perturbations in skin microbial communities (particularly those that increase *S. aureus* abundance) can influence allergic sensitization. Clinical sensitization to peanut might be primed via the skin through the use of peanut-containing oils (Lack et al., 2003) or environmental exposure to peanut allergens in house dust (Brough et al., 2013, 2015). In this regard, future work promises to determine the degree to which molecular and clinical sensitization (Box 1) occurs parenterally, and is expected to identify the extent to which microbial communities influence this process.

Mechanisms Regulating Non-responsiveness to Dietary Antigen

Oral tolerance can be defined as the induction of mucosal and systemic non-responsiveness to dietary antigen (Iweala and Nagler, 2006; Pabst and Mowat, 2012). In experimental models of oral tolerance, the ability of intragastric administration of soluble protein antigens to induce systemic non-responsiveness is revealed by subsequent peripheral immunization with the same antigen in adjuvant. As such, these experimental models are imperfect surrogates for the physiologic process that induces tolerance to food that they are intended to represent. The accepted paradigm has been that oral tolerance is mediated primarily by the induction of antigen-specific Foxp3⁺ regulatory T (Treg) cells (Pabst and Mowat, 2012). Specialized populations of dendritic cells (DCs) are thought to carry antigens that are able to cross the epithelial barrier to the mesenteric lymph nodes (MLNs) that drain the gut-associated lymphoid tissue (GALT). In the MLN, antigen presentation to naive T cells in the presence of TGF- β and retinoic acid induces upregulation of Foxp3 and

expression of the gut homing receptors $\alpha 4\beta 7$ and CCR9, allowing these newly differentiated Treg cells to home back to the intestinal lamina propria (LP) to protect against subsequent allergen challenge (Hadis et al., 2011).

Restoration of tolerance has been the guiding principle behind oral (Wood and Sampson, 2014) and epicutaneous (Mondoulet et al., 2015) approaches to immunotherapy, in which small increasing doses of allergen are administered via ingestion or skin patch to patients with food allergies. The clinical efficacy of either approach is variable, for unknown reasons. Moreover, there is little evidence for the ability of either mode of immunotherapy to induce long-lasting tolerance (as opposed to transient desensitization) in the absence of ongoing allergen administration (Wood and Sampson, 2014). The timing of antigen administration is clearly important; introduction of allergenic foods early in life seems to be optimal. An increasing prevalence of peanut allergy was already apparent by the year 2000, prompting the American Academy of Pediatrics to caution parents to withhold peanuts from children with a family history of atopy until age 3 (Gruchalla and Sampson, 2015). Nevertheless, the prevalence of peanut allergy continued to rise (Branum and Lukacs, 2008; Jackson et al., 2013). A recent large-scale randomized trial (LEAP study) showed that early introduction of peanuts to high-risk infants who were not yet clinically reactive greatly reduced the incidence of peanut allergy in this population as determined by oral food challenge at 5 years of age (Du Toit et al., 2015). Allergy prevention by early life dietary exposure might be mechanistically distinct from oral or epicutaneous desensitization protocols administered to patients who are already clinically sensitized. Although recent peanut avoidance practices in certain countries might have contributed to increased clinical sensitization to peanut, it is important to note that the delayed introduction of potentially allergenic foods cannot explain the full magnitude of a generational increase in food allergies overall.

Recent work has proposed that, in addition to the induction of antigen-specific Treg cells, the maintenance of tolerance to dietary antigen requires an epithelial barrier-protective response mediated by a class of mucosa-associated commensal anaerobes (Cao et al., 2014; Stefka et al., 2014). Atarashi et al. (2011) originally reported that anaerobic Firmicutes, in particular the Clostridia class, are critical for the induction of Foxp3⁺ Treg cells in the intestinal LP. Both immunological and physical adaptations are required to fortify the single-cell layered intestinal epithelium from continuous bombardment by the wide variety of dietary and microbial antigens continuously present in its lumen (Cao et al., 2014; Iweala and Nagler, 2006; Nagler-Anderson, 2001). Mouse studies suggest that many of these specialized physical adaptations are regulated by IL-22; its production by ROR γ ⁺ innate lymphoid cells (ILC3s) controls enterocyte proliferation, the production of mucus, and the secretion of antimicrobial peptides (AMPs), such as RegIII β and RegIII γ (Sabat et al., 2014). Microarray analysis of epithelial cells isolated from differentially colonized gnotobiotic mice demonstrated that Clostridia colonization selectively induces the expression of the anti-microbial peptide *Reg3b*, implicating activation of the IL-22/IL-23 axis (Stefka et al., 2014). Treatment of mice with neutralizing antibodies to IL-22 reduced the expression of *Reg3b/g* and increased Clostridia abundance (Stefka et al., 2014).

How does innate immune signaling by Clostridia regulate allergic sensitization to food? When dysbiosis was induced by antibiotic treatment of neonatal mice, high concentrations of the peanut allergens Ara h 2 and Ara h 6 were detected in serum upon oral food challenge at 1 week after weaning (Stefka et al., 2014). Clostridia-induced IL-22 was necessary and sufficient to significantly reduce serum peanut allergen levels. Detection of Ara h 2 and Ara h 6 by capture ELISA indicated that these proteins reached the systemic circulation with their secondary structure (B cell epitopes) intact. Resistance to degradation might, in fact, be a distinguishing feature of food allergens (Valenta et al., 2015). The relative roles of antigen-specific and bacteria-induced Foxp3⁺ Treg cells in the intestinal LP have not yet been examined. The repertoire of T cell receptors detectable on Treg cells in the gut is distinct from that found in peripheral sites; at least some bacteria-induced Treg cells are likely to recognize bacterial antigens (Lathrop et al., 2011). Other mucosa-associated bacterial populations might also stimulate innate immune signaling pathways in the host through direct cell-to-cell contact or by their secretion of metabolites. Several reports have shown that bacteria-produced short chain fatty acids (SCFAs) regulate both the proportions and functional capabilities of intestinal Treg cells (Arpaia et al., 2013; Furusawa et al., 2013; Smith et al., 2013). In this context, both antigen-specific and bacteria-induced Treg cells cooperate with ILC-produced IL-22 to maintain barrier homeostasis.

Education of B Cells in the Intestinal Mucosa

IgE specific for food allergens is required (though not sufficient, see Box 1) for the development of an anaphylactic response to food. But the mechanisms for development of Ig against dietary substances, and the morphing of food protein-reactive Ig into IgE, are poorly understood. The pre-immune Ig repertoire is generated in developing bone marrow (BM) B cells through RAG-dependent DNA assembly of V, (D), and J gene segments resulting in production of IgM, which serves as the B cell receptor (BCR). Immature B cells undergo receptor editing, where continued RAG expression and V(D)J recombination leads to changes in BCR specificity, which are thought to facilitate the development of B cell tolerance (Nemazee, 2000; Yurasov and Nussenzweig, 2007). Because essentially all studies examining BCR editing have utilized BCR transgenic or knock-in mice—which artificially and severely limit the Ig repertoire—its role in regulating the natural repertoire is not clear. Several other poorly defined selection events also play a significant role in shaping the primary Ig repertoire during maturation through the transitional-to-mature B cell stages (Levine et al., 2000). Identifying the extent to which luminal antigens (both microbial and food) regulate these primary Ig repertoire-modifying B cell selection events might help shed light on mechanisms of molecular sensitization.

After the primary Ig repertoire is established, activated mature B cells can undergo secondary Ig diversification events, namely IgH class switch recombination (CSR) and Ig variable region exon somatic hypermutation (SHM). The IgH constant region exons (C_Hs) are arranged in tandem, beginning with C μ (that encodes the IgM constant region) at the 5' end. CSR replaces initially expressed IgM with other isotypes such as IgG, IgE, or IgA by targeted repositioning of the alternative IgH locus constant region exons (e.g., C γ , C ϵ , C α), which results in deletion of intervening C_Hs. SHM can lead to affinity maturation through

iterative rounds of mutation and selection in germinal centers (Tong and Wesemann, 2015). Allergen-reactive B cells that undergo IgH CSR to IgE have the potential to elicit symptomatic allergy. However, if these B cells remain unswitched, or undergo IgH CSR to IgG or IgA instead of IgE, molecular sensitization does not occur. IgG⁺ B cells might therefore house a reservoir of memory B cell specificities that can sequentially switch to IgE (He et al., 2015). Unlike IgG, CSR to IgA in mice (or IgA2 in humans) precludes that particular clone from future switching to IgE, or any other IgH isotype, because the exons encoding IgA (mice) and IgA2 (humans) occupy the 3' most part of the IgH locus.

In terms of food allergy, the degree to which SHM is required for the development of allergen-reactive B cells undergoing CSR to IgE is not known. Although allergen sensitization might occur by cutaneous exposure as mentioned above, most food allergen contact probably occurs in the gut mucosa where commensal microbes are required to generate an environment that favors B cell CSR to IgA. Accordingly, GF mice have minimal IgA production, and this appears to license abnormally high levels of mucosal B cell CSR to IgE (Cahenzli et al., 2013). In this regard, an environment permissive for IgE might potentially result from insufficient stimuli from gut microbes. A non-mutually exclusive alternative is that defective barrier function might allow increased allergen access to peripheral lymphoid tissue where cognate B cell CSR to IgE might take place.

In addition to the lack of clarity regarding where IgE CSR occurs, how food allergen-reactive specificities appear within the Ig repertoire in the first place is not understood. As mentioned above, recent work supports the idea that the intestinal microbiota influences lymphocytes and their receptor repertoires (Chai et al., 2014; Lathrop et al., 2011; Wesemann et al., 2013). The first hint that contents of the gut lumen influence the primary Ig repertoire came from studies in chickens, where B cell development and diversification takes place in the bursa of Fabricius, an outpouching of epithelium within the avian hindgut (Weill and Reynaud, 1987). More recent work in chicks (Davani et al., 2014), newborn rabbits (Rhee et al., 2005), and lambs (Mutwiri et al., 1999) shows that the B cell repertoire in the GALT is positively selected toward gut luminal content early in life. The mouse small intestinal LP harbors early developing B cells that peak around weaning age, when V(D)J recombination and receptor editing processes modulate primary LP Ig repertoires (Wesemann et al., 2013). Consistent with LP-specific receptor editing, RAG-expressing LP B-lineage cells have similar V_H repertoires, but significantly different V_κ repertoires, when compared to those of Rag2-expressing BM counterparts. Colonization of GF mice results in an increased ratio of Igλ⁻ versus Igκ-expressing B cells specifically in the LP, indicating that microbial antigens and/or their products might drive early mucosal B cell selection (Wesemann et al., 2013). The degree to which positive versus negative selection takes place at the receptor editing stage in the setting of a polyclonal repertoire remains to be determined. In addition, the role of dietary versus microbial antigens in influencing selection events awaits future elucidation. In humans, B cell processes in neonatal intestine have not yet been examined, but precursor B cells have been observed in fetal intestine (Golby et al., 2002), and transitional B cells have also been seen in human adult gut tissue (Vossenkämper et al., 2013).

IgA at the Mucosal Barrier

Although IgE and the IgG isotype subclasses largely function within host circulation and tissues, both IgA and IgM can bind to immunoglobulin J (joining) chain, which enables transport across the epithelium and release into the lumen (Macpherson et al., 2008). IgA is dominant when sheer amount is taken into consideration. More IgA is produced than all other IgH isotypes combined (Conley and Delacroix, 1987), and most of this IgA is secreted from mucosal tissues. Until relatively recently, IgA was thought to function primarily by binding to luminal content and limiting antigen access to host tissues (referred to as immune exclusion [Pabst, 2012]). IgA can also play a role in shaping the composition of the commensal microbiota and governing the establishment of its mutualistic relationship with its host (Macpherson et al., 2015; Peterson et al., 2007). The aberrant expansion of pathobionts in mice deficient in activation-induced cytidine deaminase (which cannot undergo CSR) provided the first clue that IgA and SHM might be required to maintain commensal homeostasis (Fagarasan et al., 2002; Suzuki et al., 2004; Wei et al., 2011). Interestingly, Foxp3⁺ Treg cells contribute to IgA selection, forming a coordinated axis to regulate and potentially diversify the composition of the microbiota in the gut (Cong et al., 2009; Kawamoto et al., 2014; Tsuji et al., 2009).

The physiologic advantage of early life B cell selection in the proximity of gut content, as discussed in the animal examples above, is not yet clear. It is possible that gut microbe-selected primary (IgM) repertoires might remain localized in the GALT and serve as a foundation for both CD4 T-cell-independent and CD4 T-cell-dependent IgA production. Commensal microbes can elicit CD4 T-cell-independent IgA production with anti-bacterial specificity (Macpherson et al., 2000; Shroff et al., 1995) with contributions from both conventional (B2) and innate (B1b) B cell lineages (Bunker et al., 2015). CD4 T-cell-independent production of innate-like, polyreactive IgA might facilitate non-invasive commensal bacterial uptake into Peyer's patches in the small intestine, enabling the production of CD4 T-cell-dependent, commensal-specific IgA (Fransen et al., 2015). CD4 T-cell-independent IgA responses are also elicited by ILC3-derived lymphotoxin (LT)-α3, linking ILC3 to both innate and adaptive barrier responses (Kruglov et al., 2013). Gut microbe-primed primary Ig repertoires might thus provide a reservoir of luminal content-reactive B lineage cells as T-cell-independent IgA precursors, distinct from the T-cell-dependent IgA induced by toxins and invasive organisms (Pabst, 2012; Palm et al., 2014).

In terms of dietary allergen reactivity, non-IgE isotypes might also have a regulatory function. This could be particularly relevant for IgA against food proteins that resist degradation in early digestion processes. IgA coating might reduce the chance that allergens gain access to the epithelium, slowing movement in the mucus layer (Lai et al., 2009; Olmsted et al., 2001), thus inhibiting allergen contact and entry. Clinically, however, selective IgA deficiency is a relatively common immune deficiency and is rarely associated with symptomatic disease (Hammarström et al., 2000), possibly due to compensating secreted IgM (Macpherson and McCoy, 2015). Although several studies do not find an association of IgA deficiency and atopy (Franco et al., 2011; Kanok et al., 1978; Plebani et al., 1987), a study of 2,423 Swedish children reported that 33% of those identified with IgA deficiency

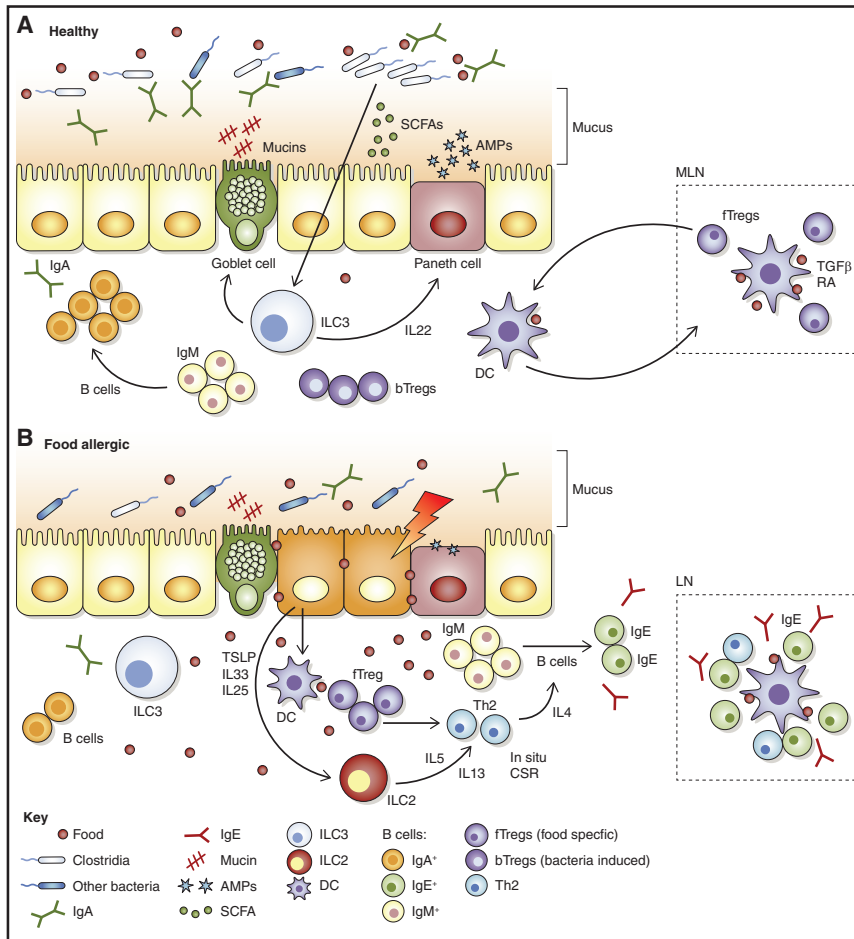


Figure 1. The Barrier Regulation Hypothesis of Allergic Disease

(A) In healthy individuals, both food-allergen-specific and bacteria-induced Treg cells cooperate with ILC-derived IL-22-dependent effector functions (e.g., mucus secretion, induction of AMPs) to maintain barrier integrity and mucosal homeostasis. Allergy protective bacterial populations residing in the proximal colon might secrete metabolites or influence cellular migration from that site to regulate allergen uptake in the small intestine.

(B) In food allergic subjects, the loss of these allergy-protective bacterial populations impairs barrier integrity. Increased allergen contact and depletion of metabolites like SCFAs stress the epithelial layer. Both DCs and ILC2s are primed by epithelial derived cytokines to induce a Th2 cell response and CSR to IgE, both locally and in peripheral LN.

lation. Early life luminal content induces an IgM and IgA response that shapes the repertoire to aid in immune exclusion. Perhaps IgA targeting of mucin-degrading bacteria is also important early in life to protect the developing mucus barrier of the small intestine and limit uptake of dietary allergens. Potentially noxious (or noxious by proxy) food proteins that evade digestion might be excluded by either (or both) of these barrier mechanisms. Defects in innate or adaptive bacteria-induced barrier protective responses might exacerbate genetic predispositions (e.g., mutations in filaggrin)

had food allergy when compared to 12% of their IgA-sufficient counterparts at 4 years of age (Janzi et al., 2009). Larger studies will be required to identify the potential role of mucosal IgA and IgM in the regulation of food allergen sensitization.

The Barrier Regulation Hypothesis of Allergic Sensitization to Food

The immune system can be viewed broadly as an essential component of our ability to co-exist with an environment that is abundant in both innocuous exposures and infectious or noxious threats. A complicated, multiply redundant, system with both innate and adaptive components is required to maintain homeostasis at barrier surfaces to eliminate potentially harmful foreign substances while avoiding pathological responses to commensal microbes or food. Emerging evidence is consistent with a barrier regulation hypothesis of allergic sensitization (Figure 1) that views allergy as an additional layer of protection against alien elements that somehow penetrate other layers of this system. In the healthy state, a microbiome replete with mucosa-associated taxa (like the Clostridia) that regulate the production of IL-22 stimulates the intestinal mucosa to produce a protective mucous layer and AMPs that titrate the abundance of this bacterial community. These bacteria-induced barrier protective functions reduce the ability of food allergens to cross the epithelial barrier and gain access to the systemic circu-

that render the host susceptible to allergen contact and entry and elicit direct or indirect stress in the epithelial barrier, particularly in the skin or intestinal mucosa.

Barrier surfaces are necessarily poised in an anti-inflammatory state. Upon allergen-mediated activation, epithelial cells secrete cytokines including TSLP, IL-33, and IL-25 that educate dendritic cells and ILC2s to promote Th2 cell immunity (Peterson and Artis, 2014). In this context, Treg cells are “reprogrammed” to the Th2 cell lineage (Noval Rivas et al., 2015) and ILC2s secrete IL-5 and IL-13 (Lee et al., 2015), promoting the induction of an allergic response—including B cell IgH CSR to IgE, which might occur in situ (Cahenzli et al., 2013)—in addition to organized lymphoid tissue, where most CSR to IgE probably takes place (Figure 1). Allergic disease can be viewed, in this context, as a consequence of environmentally induced dysregulation of the epithelial mucosal barrier (Cahenzli et al., 2013; Hill et al., 2012; Prioult and Nagler-Anderson, 2005).

The barrier regulation hypothesis suggests that the increased amounts of food-allergen-specific IgG and IgA (in addition to IgE) detectable in atopic individuals is a reflection of reduced barrier exclusion that results in increased allergen availability in the systemic circulation (Shek et al., 2005). In the absence of commensal-dependent barrier regulation, GF mice have reduced mucosal production of IgA and concomitant increases in IgE production (Cahenzli et al., 2013; Herbst et al., 2011; Hill

et al., 2012; McCoy et al., 2006; Stefka et al., 2014) and exhibit exaggerated responses to both aero (Herbst et al., 2011) and food (Stefka et al., 2014) allergens. Reducing the intestinal bacterial load in wild-type mice by treatment with broad-spectrum antibiotics raises the concentration of serum IgE (Hill et al., 2012). Microbial exposure early, but not late, in life is required for regulating IgE levels (Cahenzli et al., 2013), consistent with an early life window of time when luminal content maximally exerts its influences on the immune system.

Concluding Remarks and Future Perspectives

The dramatically increased incidence of allergic disease over a few decades suggests that allergic susceptibility is influenced by environmental factors—which offers hope for effective treatments. This environmental component to sensitization indicates that the allergic state is plastic and can thus be modulated. As the factors that contribute to sensitization are discovered, innovative modifications can be engineered to reduce the burden of allergic disease. Some of the outstanding questions and challenges include the identification of the factors that license molecular sensitization to become clinical sensitization, how to achieve sustained unresponsiveness rather than transient desensitization, the effect of the environment on Ig selection, as well as IgE production, maintenance, and memory, and what regulates the allergic march.

The microbiota is one target already identified that has the potential to modulate responses at multiple points along the continuum of allergic disease. Microbiome-modulating strategies might be efficacious either as a preventive therapy (to restore functionality in the context of environmentally induced dysbiosis) or as an adjunctive treatment co-administered with orally administered allergens. Ingestion of health-promoting bacterial preparations, or probiotics, has a long history of use and study in the context of treatment of both allergic and inflammatory disease (Hill et al., 2014). Evidence for efficacy has largely been confined to early infancy; a meta-analysis of clinical trials determined that prenatal, or early post-natal, administration of probiotics reduced total IgE levels and the risk of atopic sensitization, but not asthma or wheezing (Elazab et al., 2013; Fiocchi et al., 2015). Counteracting the dysbiosis-associated dysregulation and other potential barrier-related defects that have contributed to recent increases in allergic disease is an attractive prospect for the development of a new class of microbiome-modulating therapeutic approaches (Olle, 2013).

ACKNOWLEDGMENTS

The authors thank T. Feehley, J. Hwang, J. Boyce, and A. Granato for critical review of this manuscript. The C.R.N. laboratory is supported by the NIH (AI 106302), the Sunshine Foundation, UChicago Center for Translational Medicine, UChicago Digestive Diseases Research Core Center (DK42086), and F.A.R.E. (Food Allergy Research and Education). The D.R.W. laboratory is supported by the NIH (AI121394, and AI113217). D.R.W. holds a Career Award for Medical Scientists from the Burroughs Wellcome Fund and a New Investigator Award from F.A.R.E.

REFERENCES

Abrahamsson, T.R., Jakobsson, H.E., Andersson, A.F., Björkstén, B., Engstrand, L., and Jenmalm, M.C. (2012). Low diversity of the gut microbiota in infants with atopic eczema. *J. Allergy Clin. Immunol.* *129*, 434–440.

Alduraywish, S.A., Lodge, C.J., Campbell, B., Allen, K.J., Erbas, B., Lowe, A.J., and Dharmage, S.C. (2016). The march from early life food sensitization to allergic disease: a systematic review and meta-analyses of birth cohort studies. *Allergy* *71*, 77–89.

Arpaia, N., Campbell, C., Fan, X., Dikij, S., van der Veeken, J., deRoos, P., Liu, H., Cross, J.R., Pfeffer, K., Coffey, P.J., and Rudensky, A.Y. (2013). Metabolites produced by commensal bacteria promote peripheral regulatory T-cell generation. *Nature* *504*, 451–455.

Arrieta, M.C., Stiemsma, L.T., Dimitriu, P.A., Thorson, L., Russell, S., Yurist-Doutsch, S., Kuzeljevic, B., Gold, M.J., Britton, H.M., Lefebvre, D.L., et al.; CHILd Study Investigators (2015). Early infancy microbial and metabolic alterations affect risk of childhood asthma. *Sci. Transl. Med.* *7*, 307ra152.

Asher, M.I., Montefort, S., Björkstén, B., Lai, C.K., Strachan, D.P., Weiland, S.K., and Williams, H.; ISAAC Phase Three Study Group (2006). Worldwide time trends in the prevalence of symptoms of asthma, allergic rhinoconjunctivitis, and eczema in childhood: ISAAC Phases One and Three repeat cross-country surveys. *Lancet* *368*, 733–743.

Atarashi, K., Tanoue, T., Shima, T., Imaoka, A., Kuwahara, T., Momose, Y., Cheng, G., Yamasaki, S., Saito, T., Ohba, Y., et al. (2011). Induction of colonic regulatory T cells by indigenous *Clostridium* species. *Science* *331*, 337–341.

Azad, M.B., Konya, T., Guttman, D.S., Field, C.J., Sears, M.R., HayGlass, K.T., Mandhane, P.J., Turvey, S.E., Subbarao, P., Becker, A.B., et al.; CHILd Study Investigators (2015). Infant gut microbiota and food sensitization: associations in the first year of life. *Clin. Exp. Allergy* *45*, 632–643.

Barile, D., and Rastall, R.A. (2013). Human milk and related oligosaccharides as prebiotics. *Curr. Opin. Biotechnol.* *24*, 214–219.

Bashir, M.E., Louie, S., Shi, H.N., and Nagler-Anderson, C. (2004). Toll-like receptor 4 signaling by intestinal microbes influences susceptibility to food allergy. *J. Immunol.* *172*, 6978–6987.

Baurecht, H., Irvine, A.D., Novak, N., Illig, T., Bühler, B., Ring, J., Wagenpfeil, S., and Weidinger, S. (2007). Toward a major risk factor for atopic eczema: meta-analysis of filaggrin polymorphism data. *J. Allergy Clin. Immunol.* *120*, 1406–1412.

Belkaid, Y., and Segre, J.A. (2014). Dialogue between skin microbiota and immunity. *Science* *346*, 954–959.

Berni Canani, R., Sangwan, N., Stefka, A.T., Khan, A.A., Nocerino, R., Aitoro, R., Calignano, A., Meli, R., Mattace Raso, G., Simeoli, R., et al. (2016). *Lactobacillus rhamnosus* GG-supplemented formula expands butyrate producing bacteria in cow's milk allergic infants. *ISME J.* *10*, 742–750.

Björkstén, B., Naaber, P., Sepp, E., and Mikelsaar, M. (1999). The intestinal microflora in allergic Estonian and Swedish 2-year-old children. *Clin. Exp. Allergy* *29*, 342–346.

Björkstén, B., Sepp, E., Julge, K., Voor, T., and Mikelsaar, M. (2001). Allergy development and the intestinal microflora during the first year of life. *J. Allergy Clin. Immunol.* *108*, 516–520.

Branum, A.M., and Lukacs, S.L. (2008). Food allergy among U.S. children: trends in prevalence and hospitalizations. *NCHS Data Brief* *Oct*, 1–8.

Brough, H.A., Santos, A.F., Makinson, K., Penagos, M., Stephens, A.C., Douiri, A., Fox, A.T., Du Toit, G., Turcanu, V., and Lack, G. (2013). Peanut protein in household dust is related to household peanut consumption and is biologically active. *J. Allergy Clin. Immunol.* *132*, 630–638.

Brough, H.A., Liu, A.H., Sicherer, S., Makinson, K., Douiri, A., Brown, S.J., Stephens, A.C., Irwin McLean, W.H., Turcanu, V., Wood, R.A., et al. (2015). Atopic dermatitis increases the effect of exposure to peanut antigen in dust on peanut sensitization and likely peanut allergy. *J. Allergy Clin. Immunol.* *135*, 164–170.

Brown, S.J., Relton, C.L., Liao, H., Zhao, Y., Sandilands, A., Wilson, I.J., Burn, J., Reynolds, N.J., McLean, W.H., and Cordell, H.J. (2008). Filaggrin null mutations and childhood atopic eczema: a population-based case-control study. *J. Allergy Clin. Immunol.* *121*, 940–946.

Bunker, J.J., Flynn, T.M., Koval, J.C., Shaw, D.G., Meisel, M., McDonald, B.D., Ishizuka, I.E., Dent, A.L., Wilson, P.C., Jabri, B., et al. (2015). Innate and adaptive humoral responses coat distinct commensal bacteria with immunoglobulin A. *Immunity* *43*, 541–553.

- Cahenzli, J., Köller, Y., Wyss, M., Geuking, M.B., and McCoy, K.D. (2013). Intestinal microbial diversity during early-life colonization shapes long-term IgE levels. *Cell Host Microbe* *14*, 559–570.
- Cao, S., Feehley, T.J., and Nagler, C.R. (2014). The role of commensal bacteria in the regulation of sensitization to food allergens. *FEBS Lett.* *588*, 4258–4266.
- Chai, J.N., Zhou, Y.W., and Hsieh, C.S. (2014). T cells and intestinal commensal bacteria—ignorance, rejection, and acceptance. *FEBS Lett.* *588*, 4167–4175.
- Cho, I., and Blaser, M.J. (2012). The human microbiome: at the interface of health and disease. *Nat. Rev. Genet.* *13*, 260–270.
- Cong, Y., Feng, T., Fujihashi, K., Schoeb, T.R., and Elson, C.O. (2009). A dominant, coordinated T regulatory cell-IgA response to the intestinal microbiota. *Proc. Natl. Acad. Sci. USA* *106*, 19256–19261.
- Conley, M.E., and Delacroix, D.L. (1987). Intravascular and mucosal immunoglobulin A: two separate but related systems of immune defense? *Ann. Intern. Med.* *106*, 892–899.
- Coppa, G.V., Bruni, S., Morelli, L., Soldi, S., and Gabrielli, O. (2004). The first prebiotics in humans: human milk oligosaccharides. *J. Clin. Gastroenterol.* *38* (6, Suppl), S80–S83.
- Davani, D., Pancer, Z., and Ratcliffe, M.J. (2014). Ligation of surface Ig by gut-derived antigen positively selects chicken bursal and peripheral B cells. *J. Immunol.* *192*, 3218–3227.
- Dominguez-Bello, M.G., and Blaser, M.J. (2015). Asthma: Undoing millions of years of coevolution in early life? *Sci. Transl. Med.* *7*, 307fs39.
- Dominguez-Bello, M.G., Costello, E.K., Contreras, M., Magris, M., Hidalgo, G., Fierer, N., and Knight, R. (2010). Delivery mode shapes the acquisition and structure of the initial microbiota across multiple body habitats in newborns. *Proc. Natl. Acad. Sci. USA* *107*, 11971–11975.
- Dominguez-Bello, M.G., Blaser, M.J., Ley, R.E., and Knight, R. (2011). Development of the human gastrointestinal microbiota and insights from high-throughput sequencing. *Gastroenterology* *140*, 1713–1719.
- Donaldson, G.P., Lee, S.M., and Mazmanian, S.K. (2016). Gut biogeography of the bacterial microbiota. *Nat. Rev. Microbiol.* *14*, 20–32.
- Du Toit, G., Roberts, G., Sayre, P.H., Bahnson, H.T., Radulovic, S., Santos, A.F., Brough, H.A., Phippard, D., Basting, M., Feeney, M., et al.; LEAP Study Team (2015). Randomized trial of peanut consumption in infants at risk for peanut allergy. *N. Engl. J. Med.* *372*, 803–813.
- Eder, W., Ege, M.J., and von Mutius, E. (2006). The asthma epidemic. *N. Engl. J. Med.* *355*, 2226–2235.
- Elazab, N., Mendy, A., Gasana, J., Vieira, E.R., Quizon, A., and Forno, E. (2013). Probiotic administration in early life, atopy, and asthma: a meta-analysis of clinical trials. *Pediatrics* *132*, e666–e676.
- Erwin, E.A., and Platts-Mills, T.A. (2005). Allergens. *Immunol. Allergy Clin. North Am.* *25*, 1–14.
- Fagarasan, S., Muramatsu, M., Suzuki, K., Nagaoka, H., Hiai, H., and Honjo, T. (2002). Critical roles of activation-induced cytidine deaminase in the homeostasis of gut flora. *Science* *298*, 1424–1427.
- Fallon, P.G., Sasaki, T., Sandilands, A., Campbell, L.E., Saunders, S.P., Mangan, N.E., Callanan, J.J., Kawasaki, H., Shiohama, A., Kubo, A., et al. (2009). A homozygous frameshift mutation in the mouse Flg gene facilitates enhanced percutaneous allergen priming. *Nat. Genet.* *41*, 602–608.
- Feehley, T., Stefa, A.T., Cao, S., and Nagler, C.R. (2012). Microbial regulation of allergic responses to food. *Semin. Immunopathol.* *34*, 671–688.
- Filipiak-Pittroff, B., Schnopp, C., Berdel, D., Naumann, A., Sedlmeier, S., Onken, A., Rodriguez, E., Fölster-Holst, R., Baurecht, H., Ollert, M., et al.; GINplus and LISApplus study groups (2011). Predictive value of food sensitization and filaggrin mutations in children with eczema. *J. Allergy Clin. Immunol.* *128*, 1235–1241.
- Fiocchi, A., Pawankar, R., Cuello-Garcia, C., Ahn, K., Al-Hammadi, S., Agarwal, A., Beyer, K., Burks, W., Canonica, G.W., Ebisawa, M., et al. (2015). World Allergy Organization-McMaster University Guidelines for Allergic Disease Prevention (GLAD-P): Probiotics. *World Allergy Organ. J.* *8*, 4.
- Fitzsimmons, C.M., and Dunne, D.W. (2009). Survival of the fittest: allergology or parasitology? *Trends Parasitol.* *25*, 447–451.
- Franco, A., Parrella, R., Murru, F., Ames, P.R., Martucci, F., Rotiroli, G., Manfredi, P.V., Cioffi, D., Tommasino, C., and Esposito, V. (2011). Lack of association between IgA deficiency and respiratory atopy in young male adults. *In Vivo* *25*, 829–832.
- Fransen, F., Zagato, E., Mazzini, E., Fosso, B., Manzari, C., El Aidy, S., Chia-velli, A., D’Erchia, A.M., Sethi, M.K., Pabst, O., et al. (2015). BALB/c and C57BL/6 mice differ in polyreactive IgA abundance, which impacts the generation of antigen-specific IgA and microbiota diversity. *Immunity* *43*, 527–540.
- Furusawa, Y., Obata, Y., Fukuda, S., Endo, T.A., Nakato, G., Takahashi, D., Nakanishi, Y., Uetake, C., Kato, K., Kato, T., et al. (2013). Commensal microbe-derived butyrate induces the differentiation of colonic regulatory T cells. *Nature* *504*, 446–450.
- Golby, S., Hackett, M., Boursier, L., Dunn-Walters, D., Thiagamoorthy, S., and Spencer, J. (2002). B cell development and proliferation of mature B cells in human fetal intestine. *J. Leukoc. Biol.* *72*, 279–284.
- Gruchalla, R.S., and Sampson, H.A. (2015). Preventing peanut allergy through early consumption—ready for prime time? *N. Engl. J. Med.* *372*, 875–877.
- Guaraldi, F., and Salvatori, G. (2012). Effect of breast and formula feeding on gut microbiota shaping in newborns. *Front. Cell. Infect. Microbiol.* *2*, 94.
- Hadis, U., Wahl, B., Schulz, O., Hardtke-Wolenski, M., Schippers, A., Wagner, N., Müller, W., Sparwasser, T., Förster, R., and Pabst, O. (2011). Intestinal tolerance requires gut homing and expansion of FoxP3+ regulatory T cells in the lamina propria. *Immunity* *34*, 237–246.
- Hammarström, L., Vorechovsky, I., and Webster, D. (2000). Selective IgA deficiency (SIgAD) and common variable immunodeficiency (CVID). *Clin. Exp. Immunol.* *120*, 225–231.
- He, J.S., Narayanan, S., Subramaniam, S., Ho, W.Q., Lafaille, J.J., and Curotto de Lafaille, M.A. (2015). Biology of IgE production: IgE cell differentiation and the memory of IgE responses. *Curr. Top. Microbiol. Immunol.* *388*, 1–19.
- Hefe, S.L., Nordlee, J.A., and Taylor, S.L. (1996). Allergenic foods. *Crit. Rev. Food Sci. Nutr.* *36* (Suppl), S69–S89.
- Herbst, T., Sichelstiel, A., Schär, C., Yadava, K., Bürki, K., Cahenzli, J., McCoy, K., Marsland, B.J., and Harris, N.L. (2011). Dysregulation of allergic airway inflammation in the absence of microbial colonization. *Am. J. Respir. Crit. Care Med.* *184*, 198–205.
- Hill, D.A., Siracusa, M.C., Abt, M.C., Kim, B.S., Kobuley, D., Kubo, M., Kambayashi, T., Larosa, D.F., Renner, E.D., Orange, J.S., et al. (2012). Commensal bacteria-derived signals regulate basophil hematopoiesis and allergic inflammation. *Nat. Med.* *18*, 538–546.
- Hill, C., Guarner, F., Reid, G., Gibson, G.R., Merenstein, D.J., Pot, B., Morelli, L., Canani, R.B., Flint, H.J., Salminen, S., et al. (2014). Expert consensus document. The International Scientific Association for Probiotics and Prebiotics consensus statement on the scope and appropriate use of the term probiotic. *Nat. Rev. Gastroenterol. Hepatol.* *11*, 506–514.
- Hoff, S., Oyoshi, M.K., Macpherson, A., and Geha, R.S. (2015). The microbiota is important for IL-17A expression and neutrophil infiltration in lesional skin of Flg(ft/ft) mice. *Clin. Immunol.* *156*, 128–130.
- Human Microbiome Project Consortium (2012). Structure, function and diversity of the healthy human microbiome. *Nature* *486*, 207–214.
- Igea, J.M. (2013). The history of the idea of allergy. *Allergy* *68*, 966–973.
- Ishizaka, K., and Ishizaka, T. (1966). Physicochemical properties of reaginic antibody. 1. Association of reaginic activity with an immunoglobulin other than gammaA- or gammaG-globulin. *J. Allergy* *37*, 169–185.
- Iweala, O.I., and Nagler, C.R. (2006). Immune privilege in the gut: the establishment and maintenance of non-responsiveness to dietary antigens and commensal flora. *Immunol. Rev.* *213*, 82–100.
- Jackson, K.D., Howie, L.D., and Akinbami, L.J. (2013). Trends in allergic conditions among children: United States, 1997–2011. *NCHS Data Brief May*, 1–8.

- Janzi, M., Kull, I., Sjöberg, R., Wan, J., Melén, E., Bayat, N., Ostblom, E., Pan-Hammarström, Q., Nilsson, P., and Hammarström, L. (2009). Selective IgA deficiency in early life: association to infections and allergic diseases during childhood. *Clin. Immunol.* *133*, 78–85.
- Kalliomäki, M., Salminen, S., Arvilommi, H., Kero, P., Koskinen, P., and Isolauri, E. (2001). Probiotics in primary prevention of atopic disease: a randomised placebo-controlled trial. *Lancet* *357*, 1076–1079.
- Kanok, J.M., Steinberg, P., Cassidy, J.T., Petty, R.E., and Bayne, N.K. (1978). Serum IgE levels in patients with selective IgA deficiency. *Ann. Allergy* *41*, 22–23.
- Kawamoto, S., Maruya, M., Kato, L.M., Suda, W., Atarashi, K., Doi, Y., Tsutsui, Y., Qin, H., Honda, K., Okada, T., et al. (2014). Foxp3(+) T cells regulate immunoglobulin a selection and facilitate diversification of bacterial species responsible for immune homeostasis. *Immunity* *41*, 152–165.
- Koenig, J.E., Spor, A., Scalfone, N., Fricker, A.D., Stombaugh, J., Knight, R., Angenent, L.T., and Ley, R.E. (2011). Succession of microbial consortia in the developing infant gut microbiome. *Proc. Natl. Acad. Sci. USA* *108* (Suppl 1), 4578–4585.
- Kong, H.H., Oh, J., Deming, C., Conlan, S., Grice, E.A., Beatson, M.A., Nomicos, E., Polley, E.C., Komarow, H.D., Murray, P.R., et al.; NISC Comparative Sequence Program (2012). Temporal shifts in the skin microbiome associated with disease flares and treatment in children with atopic dermatitis. *Genome Res.* *22*, 850–859.
- Kruglov, A.A., Grivennikov, S.I., Kuprash, D.V., Winsauer, C., Prepens, S., Seleznik, G.M., Eberl, G., Littman, D.R., Heikenwalder, M., Tumanov, A.V., and Nedospasov, S.A. (2013). Nonredundant function of soluble LT α 3 produced by innate lymphoid cells in intestinal homeostasis. *Science* *342*, 1243–1246.
- Lack, G., Fox, D., Northstone, K., and Golding, J.; Avon Longitudinal Study of Parents and Children Study Team (2003). Factors associated with the development of peanut allergy in childhood. *N. Engl. J. Med.* *348*, 977–985.
- Lai, S.K., Wang, Y.Y., Wirtz, D., and Hanes, J. (2009). Micro- and macro-rheology of mucus. *Adv. Drug Deliv. Rev.* *61*, 86–100.
- Lathrop, S.K., Bloom, S.M., Rao, S.M., Nutsch, K., Lio, C.W., Santacruz, N., Peterson, D.A., Stappenbeck, T.S., and Hsieh, C.S. (2011). Peripheral education of the immune system by colonic commensal microbiota. *Nature* *478*, 250–254.
- Lee, S.Y., Yu, J., Ahn, K.M., Kim, K.W., Shin, Y.H., Lee, K.S., Hong, S.A., Jung, Y.H., Lee, E., Yang, S.I., et al. (2014). Additive effect between IL-13 polymorphism and cesarean section delivery/prenatal antibiotics use on atopic dermatitis: a birth cohort study (COCOA). *PLoS ONE* *9*, e96603.
- Lee, J.B., Chen, C.Y., Liu, B., Mugge, L., Angkasekwinai, P., Facchinetti, V., Dong, C., Liu, Y.J., Rothenberg, M.E., Hogan, S.P., et al. (2015). IL-25 and CD4(+) TH2 cells enhance type 2 innate lymphoid cell-derived IL-13 production, which promotes IgE-mediated experimental food allergy. *J. Allergy Clin. Immunol.*, S0091-6749(15)01358-5.
- Levine, M.H., Haberman, A.M., Sant'Angelo, D.B., Hannum, L.G., Cancro, M.P., Janeway, C.A., Jr., and Shlomchik, M.J. (2000). A B-cell receptor-specific selection step governs immature to mature B cell differentiation. *Proc. Natl. Acad. Sci. USA* *97*, 2743–2748.
- Ling, Z., Li, Z., Liu, X., Cheng, Y., Luo, Y., Tong, X., Yuan, L., Wang, Y., Sun, J., Li, L., and Xiang, C. (2014). Altered fecal microbiota composition associated with food allergy in infants. *Appl. Environ. Microbiol.* *80*, 2546–2554.
- Macpherson, A.J., and McCoy, K.D. (2015). Independence day for IgA. *Immunity* *43*, 416–418.
- Macpherson, A.J., Gatto, D., Sainsbury, E., Harriman, G.R., Hengartner, H., and Zinkernagel, R.M. (2000). A primitive T cell-independent mechanism of intestinal mucosal IgA responses to commensal bacteria. *Science* *288*, 2222–2226.
- Macpherson, A.J., McCoy, K.D., Johansen, F.E., and Brandtzaeg, P. (2008). The immune geography of IgA induction and function. *Mucosal Immunol.* *1*, 11–22.
- Macpherson, A.J., Köller, Y., and McCoy, K.D. (2015). The bilateral responsiveness between intestinal microbes and IgA. *Trends Immunol.* *36*, 460–470.
- Marichal, T., Starkl, P., Reber, L.L., Kalesnikoff, J., Oettgen, H.C., Tsai, M., Metz, M., and Galli, S.J. (2013). A beneficial role for immunoglobulin E in host defense against honeybee venom. *Immunity* *39*, 963–975.
- Masoli, M., Fabian, D., Holt, S., and Beasley, R.; Global Initiative for Asthma (GINA) Program (2004). The global burden of asthma: executive summary of the GINA Dissemination Committee report. *Allergy* *59*, 469–478.
- McAleer, M.A., and Irvine, A.D. (2013). The multifunctional role of filaggrin in allergic skin disease. *J. Allergy Clin. Immunol.* *131*, 280–291.
- McCoy, K.D., Harris, N.L., Diener, P., Hatak, S., Odermatt, B., Hangartner, L., Senn, B.M., Marsland, B.J., Geuking, M.B., Hengartner, H., et al. (2006). Natural IgE production in the absence of MHC class II cognate help. *Immunity* *24*, 329–339.
- Metsälä, J., Lundqvist, A., Virta, L.J., Kaila, M., Gissler, M., and Virtanen, S.M. (2013). Mother's and offspring's use of antibiotics and infant allergy to cow's milk. *Epidemiology* *24*, 303–309.
- Mondoulet, L., Dioszeghy, V., Puteaux, E., Ligouis, M., Dhelft, V., Plaquet, C., Dupont, C., and Benhamou, P.H. (2015). Specific epicutaneous immunotherapy prevents sensitization to new allergens in a murine model. *J. Allergy Clin. Immunol.* *135*, 1546–1557.
- Mueller, N.T., Bakacs, E., Combellick, J., Grigoryan, Z., and Dominguez-Bello, M.G. (2015). The infant microbiome development: mom matters. *Trends Mol. Med.* *21*, 109–117.
- Mutwiri, G., Watts, T., Lew, L., Beskorwayne, T., Papp, Z., Baca-Estrada, M.E., and Griebel, P. (1999). Ileal and jejunal Peyer's patches play distinct roles in mucosal immunity of sheep. *Immunology* *97*, 455–461.
- Nagler-Anderson, C. (2001). Man the barrier! Strategic defences in the intestinal mucosa. *Nat. Rev. Immunol.* *1*, 59–67.
- Nakamura, Y., Oscherwitz, J., Cease, K.B., Chan, S.M., Muñoz-Planillo, R., Hasegawa, M., Villaruz, A.E., Cheung, G.Y., McGavin, M.J., Travers, J.B., et al. (2013). Staphylococcus δ -toxin induces allergic skin disease by activating mast cells. *Nature* *503*, 397–401.
- Nakayama, J., Kobayashi, T., Tanaka, S., Korenori, Y., Tateyama, A., Sakamoto, N., Kiyohara, C., Shirakawa, T., and Sonomoto, K. (2011). Aberrant structures of fecal bacterial community in allergic infants profiled by 16S rRNA gene pyrosequencing. *FEMS Immunol. Med. Microbiol.* *63*, 397–406.
- Nemazee, D. (2000). Receptor editing in B cells. *Adv. Immunol.* *74*, 89–126.
- Noval Rivas, M., Burton, O.T., Wise, P., Zhang, Y.Q., Hobson, S.A., Garcia Lloret, M., Chehoud, C., Kuczynski, J., DeSantis, T., Warrington, J., et al. (2013). A microbiota signature associated with experimental food allergy promotes allergic sensitization and anaphylaxis. *J. Allergy Clin. Immunol.* *131*, 201–212.
- Noval Rivas, M., Burton, O.T., Wise, P., Charbonnier, L.M., Georgiev, P., Oettgen, H.C., Rachid, R., and Chatila, T.A. (2015). Regulatory T cell reprogramming toward a Th2-cell-like lineage impairs oral tolerance and promotes food allergy. *Immunity* *42*, 512–523.
- Nylund, L., Nermes, M., Isolauri, E., Salminen, S., de Vos, W.M., and Satokari, R. (2015). Severity of atopic disease inversely correlates with intestinal microbiota diversity and butyrate-producing bacteria. *Allergy* *70*, 241–244.
- Okada, H., Kuhn, C., Feillet, H., and Bach, J.F. (2010). The 'hygiene hypothesis' for autoimmune and allergic diseases: an update. *Clin. Exp. Immunol.* *160*, 1–9.
- Olle, B. (2013). Medicines from microbiota. *Nat. Biotechnol.* *31*, 309–315.
- Olmsted, S.S., Padgett, J.L., Yudin, A.I., Whaley, K.J., Moench, T.R., and Cone, R.A. (2001). Diffusion of macromolecules and virus-like particles in human cervical mucus. *Biophys. J.* *81*, 1930–1937.
- Olszak, T., An, D., Zeissig, S., Vera, M.P., Richter, J., Franke, A., Glickman, J.N., Siebert, R., Baron, R.M., Kasper, D.L., and Blumberg, R.S. (2012). Microbial exposure during early life has persistent effects on natural killer T cell function. *Science* *336*, 489–493.
- Pabst, O. (2012). New concepts in the generation and functions of IgA. *Nat. Rev. Immunol.* *12*, 821–832.

- Pabst, O., and Mowat, A.M. (2012). Oral tolerance to food protein. *Mucosal Immunol.* *5*, 232–239.
- Palm, N.W., Rosenstein, R.K., and Medzhitov, R. (2012). Allergic host defences. *Nature* *484*, 465–472.
- Palm, N.W., Rosenstein, R.K., Yu, S., Schenten, D.D., Florsheim, E., and Medzhitov, R. (2013). Bee venom phospholipase A2 induces a primary type 2 response that is dependent on the receptor ST2 and confers protective immunity. *Immunity* *39*, 976–985.
- Palm, N.W., de Zoete, M.R., Cullen, T.W., Barry, N.A., Stefanowski, J., Hao, L., Degnan, P.H., Hu, J., Peter, I., Zhang, W., et al. (2014). Immunoglobulin A coating identifies colitogenic bacteria in inflammatory bowel disease. *Cell* *158*, 1000–1010.
- Palmer, C.N., Irvine, A.D., Terron-Kwiatkowski, A., Zhao, Y., Liao, H., Lee, S.P., Goudie, D.R., Sandilands, A., Campbell, L.E., Smith, F.J., et al. (2006). Common loss-of-function variants of the epidermal barrier protein filaggrin are a major predisposing factor for atopic dermatitis. *Nat. Genet.* *38*, 441–446.
- Palmer, C.N., Ismail, T., Lee, S.P., Terron-Kwiatkowski, A., Zhao, Y., Liao, H., Smith, F.J., McLean, W.H., and Mukhopadhyay, S. (2007). Filaggrin null mutations are associated with increased asthma severity in children and young adults. *J. Allergy Clin. Immunol.* *120*, 64–68.
- Pantoja-Feliciano, I.G., Clemente, J.C., Costello, E.K., Perez, M.E., Blaser, M.J., Knight, R., and Dominguez-Bello, M.G. (2013). Biphasic assembly of the murine intestinal microbiota during early development. *ISME J.* *7*, 1112–1115.
- Paul, W.E. (2013). *Fundamental Immunology, Seventh Edition* (Philadelphia, New York: Lippincott-Raven).
- Penders, J., Gerhold, K., Stobberingh, E.E., Thijs, C., Zimmermann, K., Lau, S., and Hamelmann, E. (2013). Establishment of the intestinal microbiota and its role for atopic dermatitis in early childhood. *J. Allergy Clin. Immunol.* *132*, 601–607.
- Peterson, L.W., and Artis, D. (2014). Intestinal epithelial cells: regulators of barrier function and immune homeostasis. *Nat. Rev. Immunol.* *14*, 141–153.
- Peterson, D.A., McNulty, N.P., Guruge, J.L., and Gordon, J.I. (2007). IgA response to symbiotic bacteria as a mediator of gut homeostasis. *Cell Host Microbe* *2*, 328–339.
- Plebani, A., Monafò, V., Ugazio, A.G., Monti, C., Avanzini, M.A., Massimi, P., and Burgio, G.R. (1987). Comparison of the frequency of atopic diseases in children with severe and partial IgA deficiency. *Int. Arch. Allergy Appl. Immunol.* *82*, 485–486.
- Prausnitz, C., and Kustner, H. (1921). Studien über die Ueberempfindlichkeit. *Zentralbl. Bakteriol.* *86*, 160–169.
- Prescott, S., and Allen, K.J. (2011). Food allergy: riding the second wave of the allergy epidemic. *Pediatr. Allergy Immunol.* *22*, 155–160.
- Prescott, S.L., Pawankar, R., Allen, K.J., Campbell, D.E., Sinn, J.Kh., Fiocchi, A., Ebisawa, M., Sampson, H.A., Beyer, K., and Lee, B.W. (2013). A global survey of changing patterns of food allergy burden in children. *World Allergy Organ. J.* *6*, 21.
- Prioult, G., and Nagler-Anderson, C. (2005). Mucosal immunity and allergic responses: lack of regulation and/or lack of microbial stimulation? *Immunol. Rev.* *206*, 204–218.
- Profet, M. (1991). The function of allergy: immunological defense against toxins. *Q. Rev. Biol.* *66*, 23–62.
- Pulendran, B., and Artis, D. (2012). New paradigms in type 2 immunity. *Science* *337*, 431–435.
- Rhee, K.J., Jasper, P.J., Sethupathi, P., Shanmugam, M., Lanning, D., and Knight, K.L. (2005). Positive selection of the peripheral B cell repertoire in gut-associated lymphoid tissues. *J. Exp. Med.* *201*, 55–62.
- Rogier, E.W., Frantz, A.L., Bruno, M.E., Wedlund, L., Cohen, D.A., Stromberg, A.J., and Kaetzel, C.S. (2014). Secretory antibodies in breast milk promote long-term intestinal homeostasis by regulating the gut microbiota and host gene expression. *Proc. Natl. Acad. Sci. USA* *111*, 3074–3079.
- Russell, S.L., Gold, M.J., Hartmann, M., Willing, B.P., Thorson, L., Wlodarska, M., Gill, N., Blanchet, M.R., Mohn, W.W., McNagny, K.M., and Finlay, B.B. (2012). Early life antibiotic-driven changes in microbiota enhance susceptibility to allergic asthma. *EMBO Rep.* *13*, 440–447.
- Sabat, R., Ouyang, W., and Wolk, K. (2014). Therapeutic opportunities of the IL-22-IL-22R1 system. *Nat. Rev. Drug Discov.* *13*, 21–38.
- Savage, D.C. (1977). Microbial ecology of the gastrointestinal tract. *Annu. Rev. Microbiol.* *31*, 107–133.
- Shek, L.P., Bardina, L., Castro, R., Sampson, H.A., and Beyer, K. (2005). Humoral and cellular responses to cow milk proteins in patients with milk-induced IgE-mediated and non-IgE-mediated disorders. *Allergy* *60*, 912–919.
- Shroff, K.E., Meslin, K., and Cebra, J.J. (1995). Commensal enteric bacteria engender a self-limiting humoral mucosal immune response while permanently colonizing the gut. *Infect. Immun.* *63*, 3904–3913.
- Sicherer, S.H., and Sampson, H.A. (2014). Food allergy: Epidemiology, pathogenesis, diagnosis, and treatment. *J. Allergy Clin. Immunol.* *133*, 291–307.
- Smith, P.M., Howitt, M.R., Panikov, N., Michaud, M., Gallini, C.A., Bohlooly-Y, M., Glickman, J.N., and Garrett, W.S. (2013). The microbial metabolites, short-chain fatty acids, regulate colonic Treg cell homeostasis. *Science* *341*, 569–573.
- Stefka, A.T., Feehley, T., Tripathi, P., Qiu, J., McCoy, K., Mazmanian, S.K., Tjota, M.Y., Seo, G.Y., Cao, S., Theriault, B.R., et al. (2014). Commensal bacteria protect against food allergen sensitization. *Proc. Natl. Acad. Sci. USA* *111*, 13145–13150.
- Stetson, D.B., Voehringer, D., Grogan, J.L., Xu, M., Reinhardt, R.L., Scheu, S., Kelly, B.L., and Locksley, R.M. (2004). Th2 cells: orchestrating barrier immunity. *Adv. Immunol.* *83*, 163–189.
- Strid, J., Sobolev, O., Zafirova, B., Polic, B., and Hayday, A. (2011). The intra-epithelial T cell response to NKG2D-ligands links lymphoid stress surveillance to atopy. *Science* *334*, 1293–1297.
- Suzuki, K., Meek, B., Doi, Y., Muramatsu, M., Chiba, T., Honjo, T., and Fagarasan, S. (2004). Aberrant expansion of segmented filamentous bacteria in IgA-deficient gut. *Proc. Natl. Acad. Sci. USA* *101*, 1981–1986.
- Thompson-Chagoyan, O.C., Vieites, J.M., Maldonado, J., Edwards, C., and Gil, A. (2010). Changes in faecal microbiota of infants with cow's milk protein allergy—a Spanish prospective case-control 6-month follow-up study. *Pediatr. Allergy Immunol.* *21*, e394–e400.
- Thompson-Chagoyan, O.C., Fallani, M., Maldonado, J., Vieites, J.M., Khanna, S., Edwards, C., Doré, J., and Gil, A. (2011). Faecal microbiota and short-chain fatty acid levels in faeces from infants with cow's milk protein allergy. *Int. Arch. Allergy Immunol.* *156*, 325–332.
- Thorburn, A.N., Macia, L., and Mackay, C.R. (2014). Diet, metabolites, and “western-lifestyle” inflammatory diseases. *Immunity* *40*, 833–842.
- Tong, P., and Wesemann, D.R. (2015). Molecular mechanisms of IgE class switch recombination. *Curr. Top. Microbiol. Immunol.* *388*, 21–37.
- Tsuji, M., Komatsu, N., Kawamoto, S., Suzuki, K., Kanagawa, O., Honjo, T., Hori, S., and Fagarasan, S. (2009). Preferential generation of follicular B helper T cells from Foxp3+ T cells in gut Peyer's patches. *Science* *323*, 1488–1492.
- Valenta, R., Hochwallner, H., Linhart, B., and Pahr, S. (2015). Food allergies: the basics. *Gastroenterology* *148*, 1120–31.
- Vossenkämper, A., Blair, P.A., Safinia, N., Fraser, L.D., Das, L., Sanders, T.J., Stagg, A.J., Sanderson, J.D., Taylor, K., Chang, F., et al. (2013). A role for gut-associated lymphoid tissue in shaping the human B cell repertoire. *J. Exp. Med.* *210*, 1665–1674.
- Wei, M., Shinkura, R., Doi, Y., Maruya, M., Fagarasan, S., and Honjo, T. (2011). Mice carrying a knock-in mutation of *Aicda* resulting in a defect in somatic hypermutation have impaired gut homeostasis and compromised mucosal defense. *Nat. Immunol.* *12*, 264–270.
- Weidinger, S., Illig, T., Baurecht, H., Irvine, A.D., Rodriguez, E., Diaz-Lacava, A., Klopp, N., Wagenpfeil, S., Zhao, Y., Liao, H., et al. (2006). Loss-of-function

- variations within the filaggrin gene predispose for atopic dermatitis with allergic sensitizations. *J. Allergy Clin. Immunol.* *118*, 214–219.
- Weill, J.C., and Reynaud, C.A. (1987). The chicken B cell compartment. *Science* *238*, 1094–1098.
- Wesemann, D.R., Portuguese, A.J., Meyers, R.M., Gallagher, M.P., Cluff-Jones, K., Magee, J.M., Panchakshari, R.A., Rodig, S.J., Kepler, T.B., and Alt, F.W. (2013). Microbial colonization influences early B-lineage development in the gut lamina propria. *Nature* *501*, 112–115.
- Wood, R.A., and Sampson, H.A. (2014). Oral immunotherapy for the treatment of peanut allergy: is it ready for prime time? *J. Allergy Clin. Immunol. Pract.* *2*, 97–98.
- Yurasov, S., and Nussenzweig, M.C. (2007). Regulation of autoreactive antibodies. *Curr. Opin. Rheumatol.* *19*, 421–426.